

# PUBLIC AUCTION

ELVERSON AREA

**QUALITY RANCH HOME ON 4.59 ACRE SECLUDED TRACT  
J. D. 2150 TRACTOR, GUNS, FURNITURE, PERSONAL PROPERTY**

**SATURDAY SEPTEMBER 26, 2015 9 A.M.  
REAL ESTATE 1 P.M.**

**LOCATION: 1621 Elverson Road, Elverson. From Elverson take Rt. 82 North, approx. 1 mile, to driveway on right.**



Real estate is a brick and frame siding ranch home with approx. 2159 sq. ft. of living space. home has custom kitchen with skylight, Jenn Air range and oven, dishwasher, and attached dining area with 2 storage closets. Adjacent open dining room and family room with French doors to brick patio. Spacious master bedroom with sitting room, Master bath with sunken whirlpool tub, shower and walk in closet. Laundry and half bath. Other end of home has two bedrooms, full bath and large walk

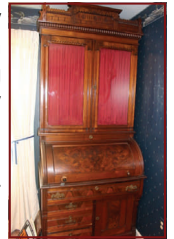


in storage closet off hall way. Attached 2 car garage with additional storage overhead. Large unfinished basement with high ceiling and garage door drive in access on end. Oil hot air heater, central air and flue for wood stove. Long paved driveway, gives privacy to this 4.59 acre, nicely landscaped tract, that overlooks farmland. Caernarvon Township, Berks County. Twin Valley Schools. Taxes:\$5751.

**Open House: Saturdays September 5, 12, 19 1-3 p.m.**

**Terms: 10% down, Balance due at settlement on or before 45 days.**

**Personal property:** Milk bottles-Zieglers, Meadowbrook, Ink wells, 2 Dietz lanterns, electric insulators, Hemingray, early medicine bottles, iron kettles with pot stirrer and lid lifter, baskets, chest freezer, GE dryer, Kitchenaid washer, bedroom suite with tall chest and double bed, Cross walk treadmill, Life smart heater, cedar chest, gun cabinet, solid pine dining room table and chairs with boards, oak wall table with drawer, dark pine dining room table with chairs, hutch and dry sink, **Lazy boy sectional with queen bed**, patio furniture, **burl wood roll top desk bookcase**, futon, dough tray, small chest of drawers, early school desk from Conestoga school. deer heads, clothes tree, Queen Anne wing back chair, linens, roll away cot, camping equipment, large suitcase, games, Pyrex bowls, Princess house bowls, Fostoria American, early toaster, Bavarian Germany China service for 12, mason jars, and other items.



**Tools, etc.:** Single hand crank corn shelter, Shindaiwa chain saw, lawn spreader and Lincoln arc welder, toboggan, shop vac, parts organizers, come a long, snowmobile skis, Ford and international wrenches, tractor wrenches, early socket set, Ford and IH monkey wrenches, old iron hinges, beam scale, draw knife, wood pulleys, hay hooks, milking stool, augers, misc hand tools, ropes, rope and tackle, cords, large cleaver, hunting knives, early shaving mug and brush, straight razor, 1972 Elverson Fire Co mug, Elverson bank bag, early advertising pieces including Zooks Buggies from Elverson, grease gun, meat grinder in box, 1/2 inch electric drill, Milwaukee angle grinder, car jack, fiberglass step ladder, battery charger, garden hose, air compressor, **Stihl** weed eater, **Echo** back pack blower, quilt set, 27, 22, 39 **license plates**, tire chains, campfire pie makers, large wooden mallet, digging iron, large iron kettle, bird bath, hose reel, cast iron flower trough, barrel pump, clevises, old shutters, wooden ammo box, old hardware, brace and bits, flue dampers, and other items.



**John Deere 2150 diesel** with 4215 hours, High /Low good rubber, 1 owner, **New Holland 451** sickle mower, **New Holland L 425** skid loader with 2025 hours, ( works, as is ) , Troy-bilt 2500 pressure washer.



Guns: **Marlin** 336 32 special with 3x9 Bushnell, **Browning** 308 BLR lever 3x9 Bushnell, Mossberg 183D-A 410, hunting clothes.

**Well laid out, one owner, Ranch home with outstanding setting.**

**Terms by: Ralph and Carol Stoltzfus**

**Attorney: Kling and Fanning**



**tljonesauctioneers.com**