

TERRE HILL AREA

PUBLIC AUCTION

Saturday, August 15, 2020 • 8:30 A.M.

Real estate at 1:00 P.M.

846 Camp Meeting Road, East Earl PA 17519

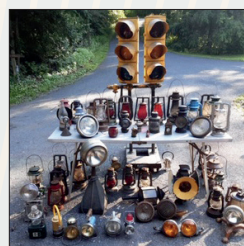
From main St. Terre Hill, take R. 897 North to left on Camp Meeting Road, to Home on Right.

2 STORY CUSTOM COUNTRY HOME, 2 STORY 2 CAR GARAGE

Antiques, '46 Chevy Truck, Cycles, Hit & Miss Engine, Signs, Etc.



Real Estate is a stone and siding 2 story home with approx. 2361 sq. ft. of living space. Main Level has Eat-in Kitchen with Barn board cabinetry, dish washer, and island. Spacious adjoining family room has exposed beam ceiling, large sand stone fireplace and solid oak hardwood floors. Foyer and half bath. 2nd level has 3 spacious bedrooms with large closets. Full Bath off Hallway. Walkout basement has laundry/mudroom, family room with stone hearth and custom wet bar, and an additional bath. Enclosed porch connects home and post and beam 2 car garage with 2nd floor. Heat pump central air and wood/coal stove. Corn crib gazebo, plumbed outhouse with sink, nicely landscaped private lot, circular paved drive. 2.1 Acre lot Elanco schools. Taxes: \$4840. on-site well and septic.



- See Reverse side for more listings and photos. -

Open house: Saturdays July 25, Aug. 1, 8 1-3 p.m. • Terms: 10% down, balance due at settlement on or before 60 days.



TRACEY L JONES
AUCTIONEERS
610-286-7834

NOTE: Solid one owner home and Garage in a great setting and area. Must see country style home and property. Many, many good antique and collectible pieces, may be selling with 2 auctioneers. Sellers downsizing to Clearfield county. Truck and cycles sold after Real estate at 1:00.

Terms By:
Leon L. and Stacey E. Stauffer
Attorney: Kling and Deibler

www.tljonesauctioneers.com

PUBLIC AUCTION

**Saturday, August 15, 2020
8:30 AM**

Antiques etc: Many, lanterns, cast iron cookware (including Griswold, Wagner), vintage fans, advertising signs, early gages, alarm bells, petroleum tins, tools, early outboard motors, brass engine oilers, 1848 paint pigment grinder, valve handles, J.D air pump, Hit & miss engine (Field Force Pump Co. Elmira N.Y.)

Admiral Schwin Bike, NCR brass cash register, Tractor tool boxes, Railroad lanterns, Cast Iron hand pumps, lantern wall brackets, 4 pedal cars, Peter Wright anvil, advertising thermometers, copper kettle, boiler, Dairylea clock, Wilbur chocolate mold, Early chainsaws, 1946 Chevy Truck parts, misc. early truck parts, Brady Guitar, Global Banjo, ice tongs, Iron gate, saw blades, and many other items not listed.

Misc., household and tools: Ingersoll rand T30 air compressor, Home craft wood lathe, Metal Lathe, Heavy duty craftsman belt and disc sander, Pyrex dishes and Correlle, barn and Craftwood lumber, Firewood, 2 bottom Dearborn plow, metal glider, etc.

Truck and cycles: 1946 restored Chevy stake bed truck (235 engine), 1981 CSR100 with 6671 miles, 1972 Harley with 9035 miles

Terms: Cash, Pa. Check or Credit Card with 4% service fee




TRACEY L JONES
AUCTIONEERS
610-286-7834

Terms By:
Leon L. and Stacey E. Stauffer
Attorney: Kling and Deibler